

GE Healthcare



Hand in hand for a healthier world.

LOGIQ™ V2



The brilliance of color.

The simplicity of GE.

Easy to use color imaging in a portable ultrasound system

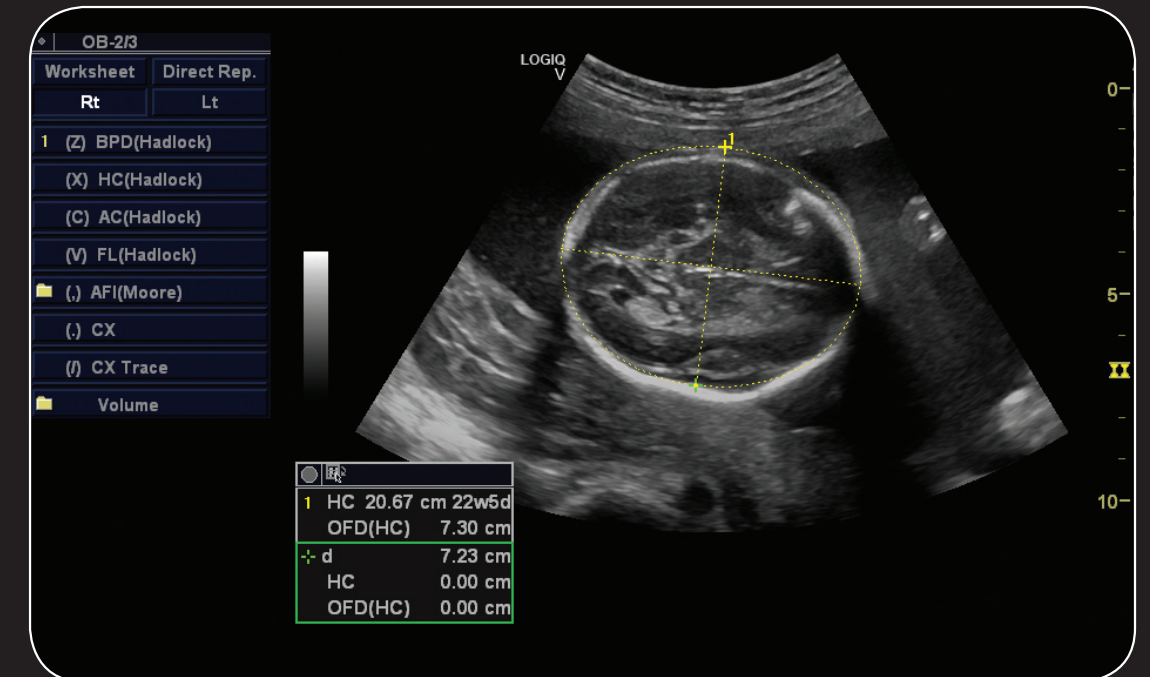
You use every tool possible to help your patients pursue healthier lives. Add the advanced capabilities of color Doppler to patient care with the compact LOGIQ V2 ultrasound system.

- Excellent image quality – using advanced technologies migrated from our flagship LOGIQ systems
- Efficient workflow - portability and automation help the busy general practice
- Real-time and interactive tools – help support clinical decisions and enhance diagnostic confidence
- Reliability backed by a multi-year warranty offering – smart investment



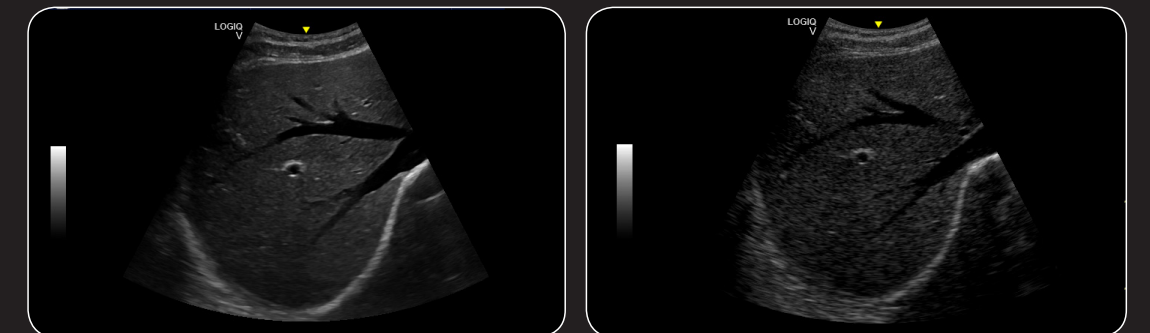
Exceptional images and easy-to-use color

Look at the images of the LOGIQ V2 system – both black & white and color – and you'll see decades of GE expertise. Many advanced imaging technologies are now yours in the compact LOGIQ V2:



SonoBiometry - workflow tool that automatically places calipers to allow you to perform key fetal biometry measurements quickly. It can help enhance clinical workflow by reducing keystrokes and automating key manual fetal measurements such as:

- Bi-Parietal Diameter (BPD)
- Head Circumference (HC)
- Abdominal Circumference (AC)
- Femur Length (FL)



CrossXBeam™ - Enhances your ability to visualize tissue interfaces and differentiate borders, using spatial compound imaging technology.

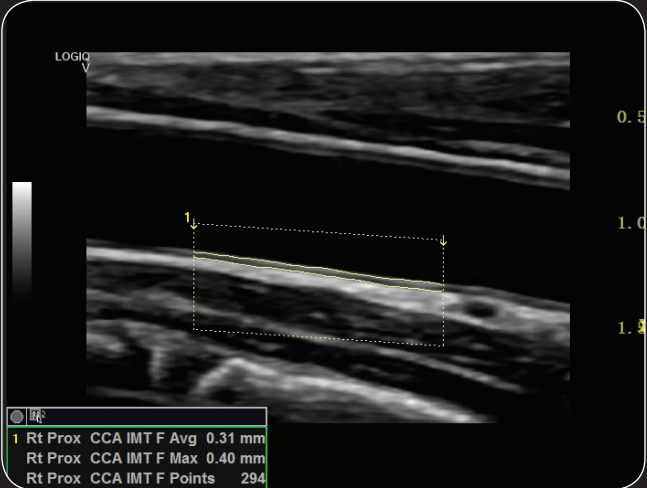
A system as versatile as your practice

You'll find the clinical flexibility of the LOGIQ V2 tailor-made for your general practice. This versatile system accommodates a wide range of exams, including:

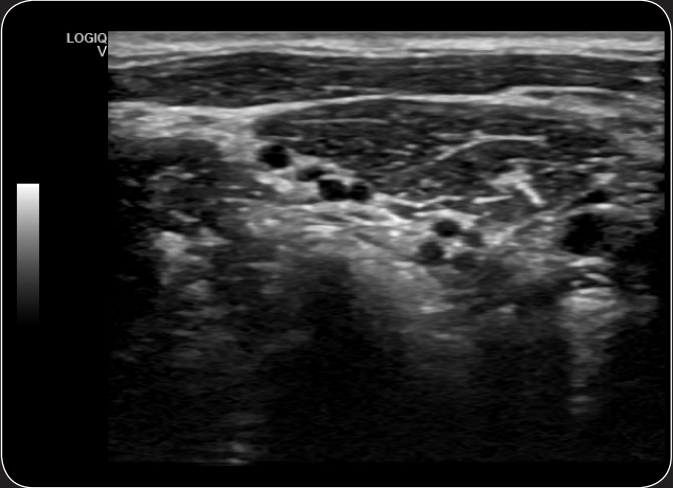
- Abdominal
- Obstetrics & Gynecology
- Small parts
- Vascular
- Cardiac
- Pediatric
- Transcranial



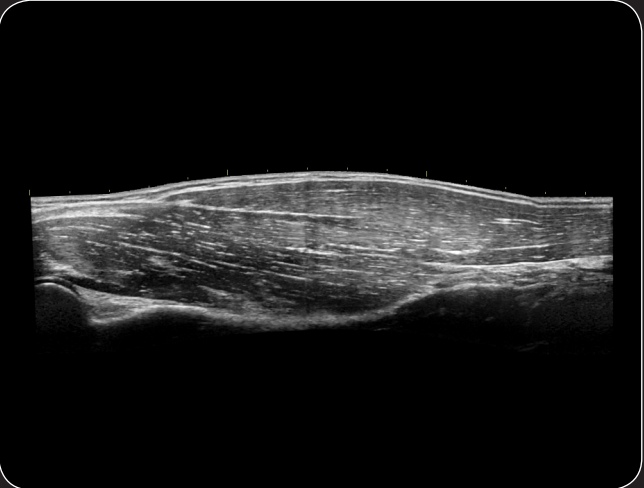
Liver



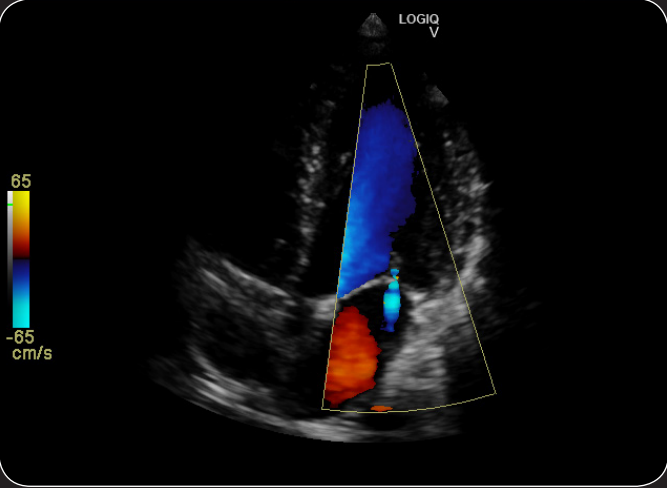
Carotid



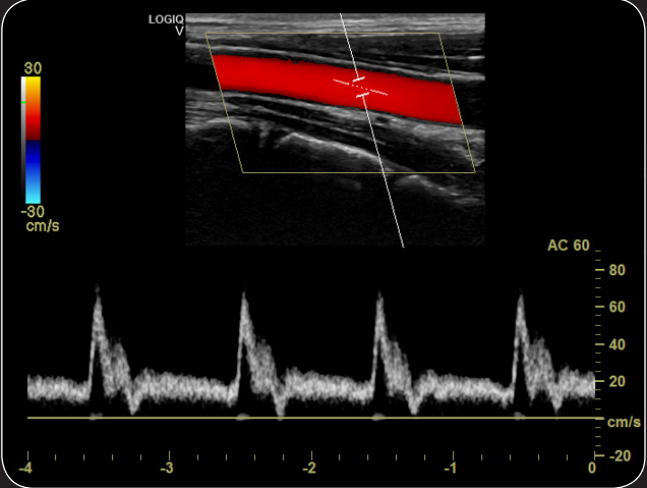
Brachial plexus



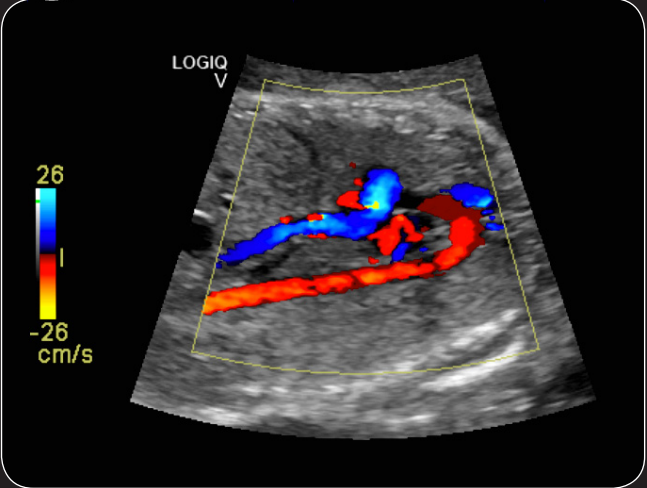
Biceps



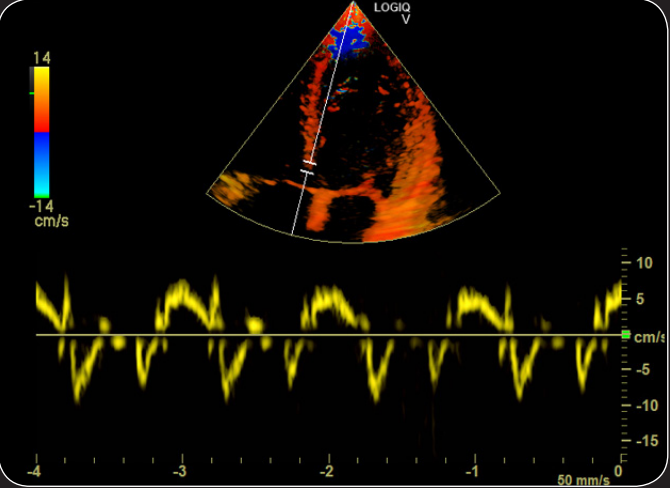
Cardiac color



Carotid color with Doppler



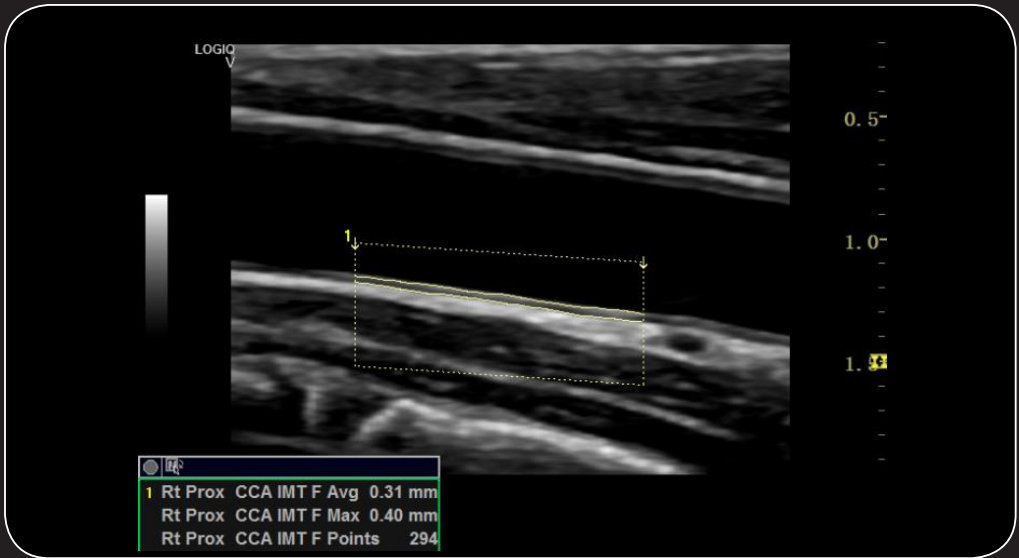
Fetal heart



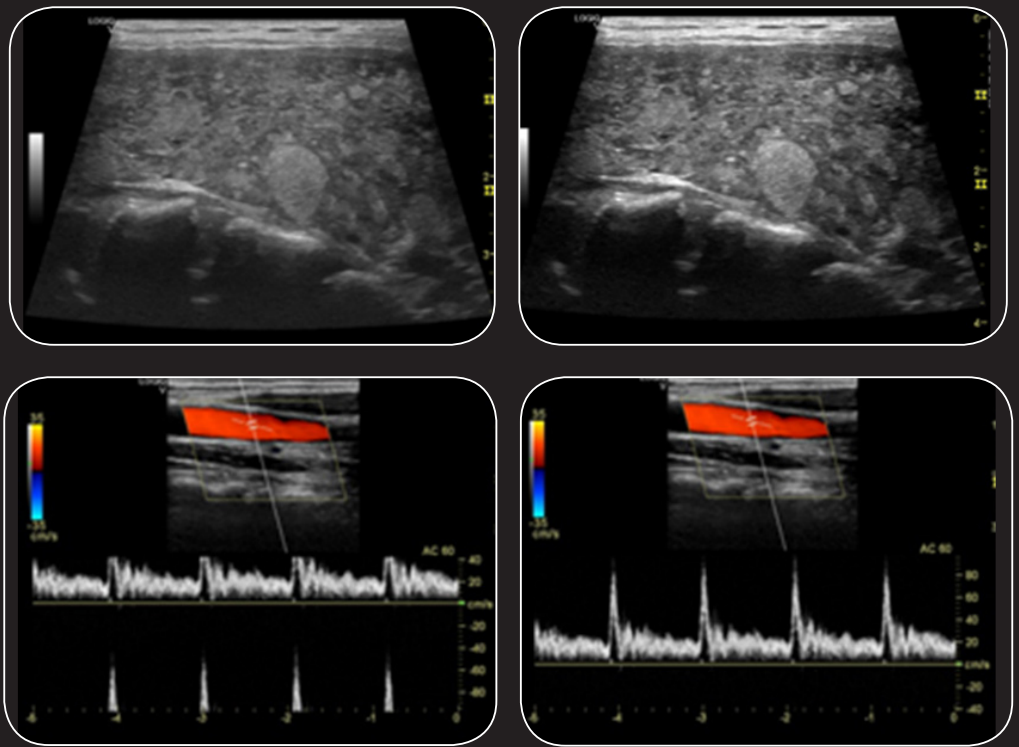
TVI with Doppler

Push few buttons, enhance exam efficiency

The LOGIQ V2 control panel is optimized for ease of operation with sophisticated automation that helps you get fast, accurate information with few keystrokes.



Auto IMT – Automates measurement of intima-media thickness for fast carotid exams.



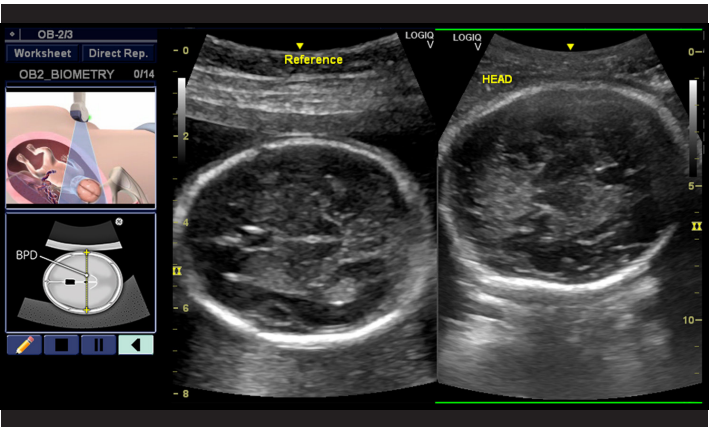
Auto Optimization - Optimizes contrast resolution in B-Mode, and baseline, invert, scale and angle correction in spectral modes

Guidance — real time, real easy

The LOGIQ V2 gives you access to real-time guidance to support exam efficiency and accuracy:

- **Scan Coach** – Innovative scan plane reference tool that displays reference images, animations, and schematics during live scanning.
- **Onboard help** – Interactive access to information on settings, operation, connectivity, and maintenance, plus a link to the user manual for more details.

Plus, you become a member of the LOGIQ Club, with access to tools and resources to help you experience the full power of your LOGIQ ultrasound system.



Scan Coach



Onboard help

Reliability that drives productivity

With its proven hardware and software, simplified functionality, and rugged engineering, the LOGIQ V2 delivers robust dependability for heavy workloads and a wide variety of patients.

Plus, the system is backed by equally strong GE service and support, and a multi-year warranty offering that includes probes, parts, and labor.

With its compact design – yet large LCD display – and standard battery back-up, the LOGIQ V2 will keep pace with your patient care needs. It fits into small spaces and easily maneuvers where you need it.





About GE Healthcare

GE Healthcare provides transformational medical technologies and services to meet the demand for increased access, enhanced quality and more affordable healthcare around the world. GE (NYSE: GE) works on things that matter - great people and technologies taking on tough challenges. From medical imaging, software & IT, patient monitoring and diagnostics to drug discovery, biopharmaceutical manufacturing technologies and performance improvement solutions, GE Healthcare helps medical professionals deliver great healthcare to their patients.

GE Healthcare
9900 innovation Drive
Wauwatosa, WI 53226
U.S.A.

www.gehealthcare.com

Imagination at work

Data subject to change

© 2015 General Electric Company. December 2015/JB36665XX

GE, the GE Monogram, imagination at work, CrossXBeam and LOGIQ are trademarks of General Electric Company.

GE Medical Systems Ultrasound & Primary Care Diagnostics, LLC, a General Electric Company, doing business as GE Healthcare.

Reproduction in any form is forbidden without prior written permission from GE. Nothing in this material should be used to diagnose or treat any disease or condition. Readers must consult a healthcare professional.