

Vscan

Pocket-sized ultrasound device provides a quick look.

When triaging admissions, on rounds, or performing consultancy services, cardiologists often don't have immediate access to comprehensive ultrasound systems.

GE Healthcare's new pocket-sized ultrasound device, Vscan™ provides a convenient, easy-to-use diagnostic tool that is always with you. It's small enough to fit in a lab coat pocket, so cardiologists can use it to quickly assess cardiac anatomy and function, wherever and whenever needed. For a quick look that can provide immediate answers to focused cardiovascular questions and accelerated follow-up – for more efficient workflow and patient management.

Vscan is as easy to learn as it is to use. The Vscan online Portal Webucation provides excellent training tools to get you started – helping you to begin using Vscan in your clinical environment.



healthymagination

a GE commitment



Fast look. Better patient management.



The easy-to-use Vscan ultrasound device offers cardiologists a fast look and provides:

- More accurate information to help speed diagnosis and improve patient management and workflow.
- Lightweight, pocket-sized portability – fits in a lab coat pocket – and robust durability.
- Two standard imaging modes, including black and white for anatomy and color-coded blood flow.
- Intuitive user interface that can be easily controlled with one hand using the thumb.
- Intelligent tools for workflow enhancement - AutoOptimize to quickly obtain optimal settings and AutoCycle, which automatically selects heart cycle for quick review and storage without electrodes.
- Voice annotation, which can be stored with any scan.
- Battery charger station and battery life of one hour continuous scanning – good for up to 30 patients.
- USB docking station to connect to PC and customer's data management tools.
- 4 GB micro-SD card capable of storing hundreds of exams.
- Gateway software with service tools and remote diagnostics.
- Online Portal Webucation, which includes basic imaging techniques, anatomy, troubleshooting tips, and examples of clinical images.



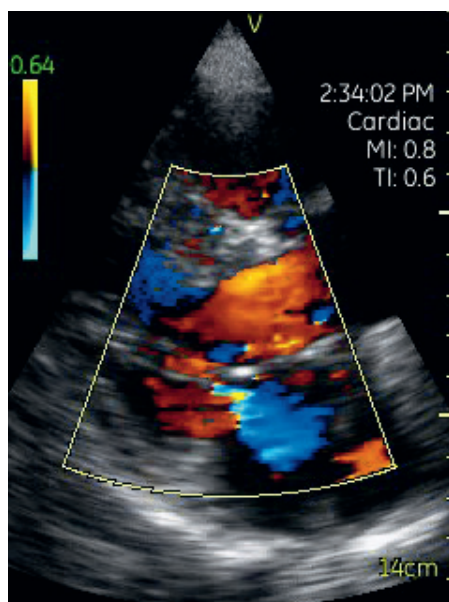
Potential applications.

Potential cardiology applications include:

- Immediate assessment of pericardial effusion.
- Rapid evaluation of cardiac murmurs to assess valve thickening and blood flow leakage.
- Assessment of left ventricular cardiac function to determine if patient is at risk for heart failure.
- Evaluation of myocardial thickness, hypertrophy, in hypertensive patients.

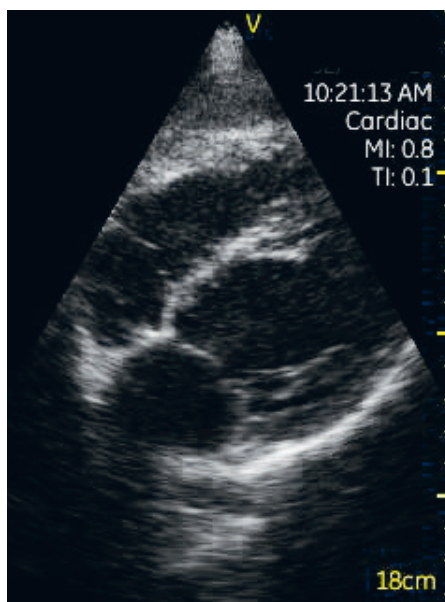
For more information, visit us at <https://vscan.gehealthcare.com>.

Mitral valve with color



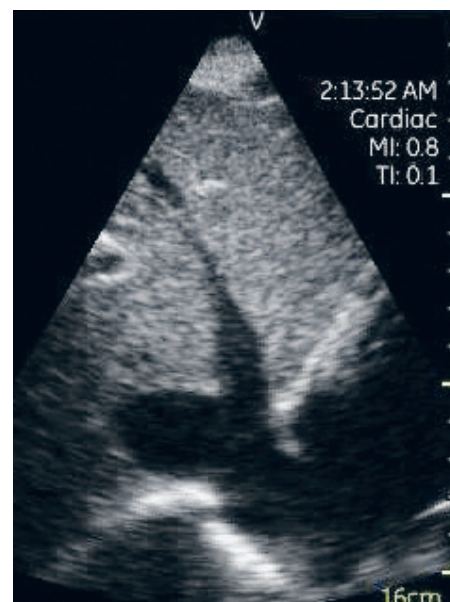
Assessment of mitral valve function

Subcostal with effusion



Evaluate the presence of pericardial effusion

Inferior vena cava image



Evaluation of inferior vena cava size and response

©2010 General Electric Company – All rights reserved.

General Electric Company reserves the right to make changes in specifications and features shown herein, or discontinue the product described at any time without notice or obligation.

GE, GE Monogram and Vscan are trademarks of General Electric Company.

GE Medical Systems Ultrasound & Primary Care Diagnostics, LLC, a subsidiary of General Electric Company, doing business as GE Healthcare.

UNITED KINGDOM

GE Medical Systems Ultrasound
2, Napier Road
Bedford MK41 0JW
T 44 1234 340881
F 44 1234 266261

EUROPE

GE Ultraschall Deutschland GmbH
Beethovenstr. 239, 42655 Solingen
Germany
T 49 212-28 02-0
F 49 212-28 02 28

AMERICAS

GE Healthcare
9900 Innovation Drive
Wauwatosa, WI 53226
U.S.A.
T 1 888 202 5582

ASIA

GE Healthcare Clinical
Systems ASIA
1105-1108 Maxdo Center
8 XingYi Road, Shanghai
200336
T 86 21 5257 4640
F 86 21 5208 0582

About GE Healthcare

GE Healthcare provides transformational medical technologies and services that are shaping a new age of patient care. Our broad expertise in medical imaging and information technologies, medical diagnostics, patient monitoring systems, drug discovery, biopharmaceutical manufacturing technologies, performance improvement and performance solutions services helps our customers to deliver better care to more people around the world at a lower cost. In addition, we partner with healthcare leaders, striving to leverage the global policy change necessary to implement a successful shift to sustainable healthcare systems.

About healthymagination

GE's "healthymagination" is about better health for more people. We've committed \$6 billion to continuously develop innovations that help clinicians and healthcare providers deliver high-quality healthcare at lower cost to more people around the world. For more information about our healthymagination commitment, visit www.ge.com/healthymagination

www.gehealthcare.com



GE imagination at work