



Simple. Fast. Precise.
Empowering Point of Care.

The LOGIQ™ *e* Pro Edition Ultrasound System



Challenges in Point of Care

Acute intervention. Chronic patient management. Needle guidance. Action-oriented patient care. When physicians who use ultrasound at the point of care met with GE scientists, they asked for a system designed for immediate-action workflow, bright-room operation, precise guidance and general imaging to advanced echocardiography (TTE or TEE).

Designed for Point of Care

See clearly. See quickly. Guide precisely. Those were the values users requested that drove the creation of the LOGIQ *e* Pro Edition. Its imaging engine comes from GE's flagship console systems, delivering crisp images in a compact package. Point of care specific software and transducers help to see the needle to administer a block or perform an aspiration quickly, even in the obese patient.

Simple

The LOGIQ *e* Pro Edition's specialized software and transducers help you keep up with treatment advances and simplify interventions. Terrific right-out-of-the-box imaging – optimized for Point of Care – makes the technology transparent so that you can focus on the patient.

- **Simple consistency.** Patient Follow-up Tool with Fusion helps ensure technical consistency from exam-to-exam to help clinical conclusions not be clouded by inconsistent technique.
- **Simple comparison.** Sometimes comparing left-to-right or before-and-after is the key to clinical decision making. Simultaneous Split Screen makes the comparison nearly automatic.

Fast

Whether you're measuring seconds for clinical reasons, or you're measuring productivity for business reasons, the LOGIQ *e* Pro Edition was built to help make you fast. The highly portable system easily moves from patient to patient.

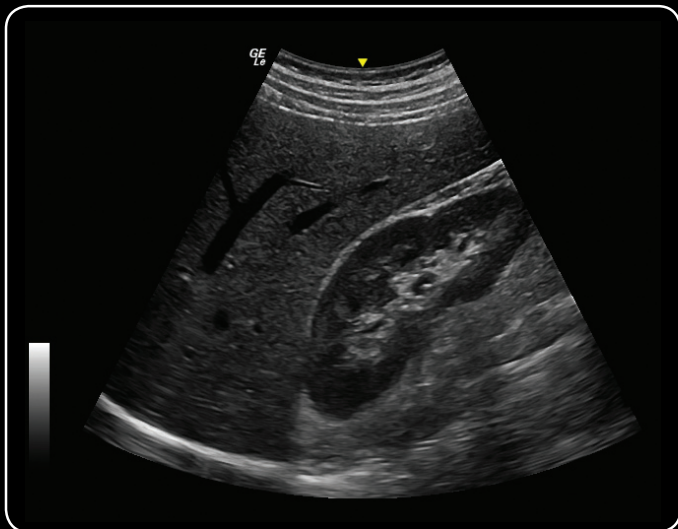
- **Imaging on the go.** Compact and battery-operated, the LOGIQ *e* allows flexibility in moving from patient-to-patient.
- **Document on the fly.** Save images to a memory stick or network devices. And choose between PACS and EMR-compatible formats.

Precise

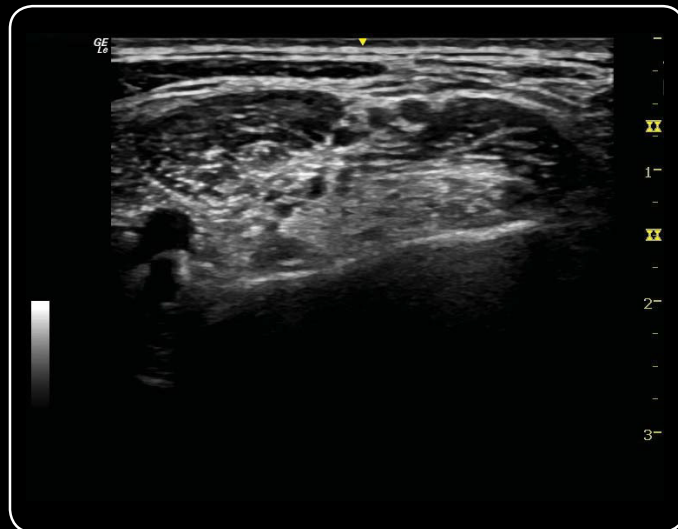
Diagnostic or guidance, image quality matters. Crisp imaging is at the core of the LOGIQ *e* Pro Edition.

- **Tissue differentiation matters.** The LOGIQ *e* Pro Edition imaging engine is separately optimized for each Point of Care application.
- **See the needle tip.** The LOGIQ *e* Pro Edition uses two different types of ultrasound: One for tissue and one for metal. This helps the needle stand out and allows separate control of the needle appearance.
- **Image almost the whole body... and almost any body.** A wide variety of transducers offer versatility for applications from head to heart to toe, even in obese patients.
- **See in 3D.** Use any transducer¹ to show anatomical relationships intuitively with Easy3D.

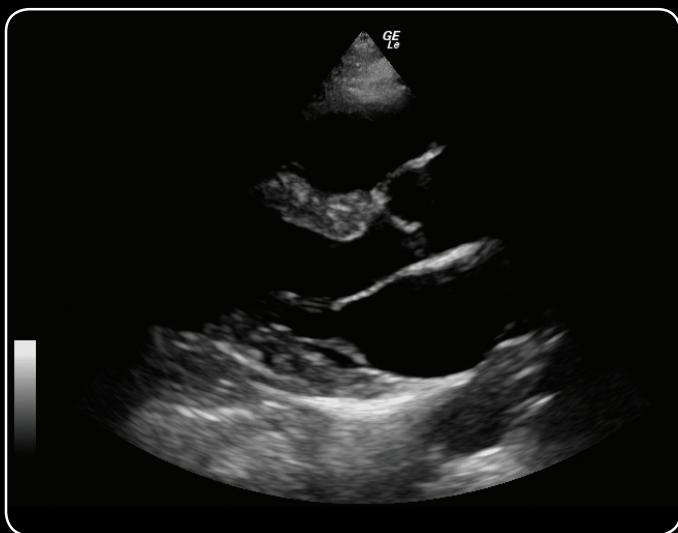
¹"Any transducer" applies to all transducers that have been validated on the LOGIQ *e* Pro Edition.



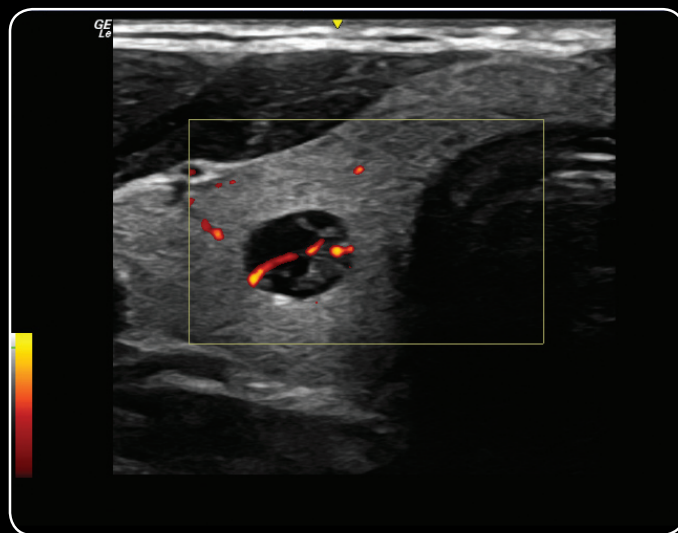
Superior liver and kidney definition demonstrating the area of Morison's pouch using the 4C



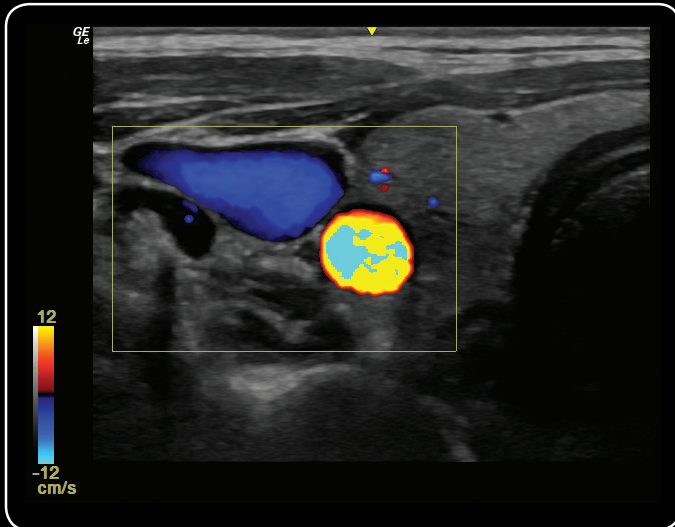
Brachial plexus nerve at the interscalene level is clearly delineated between the scalene muscles while utilizing the 12L



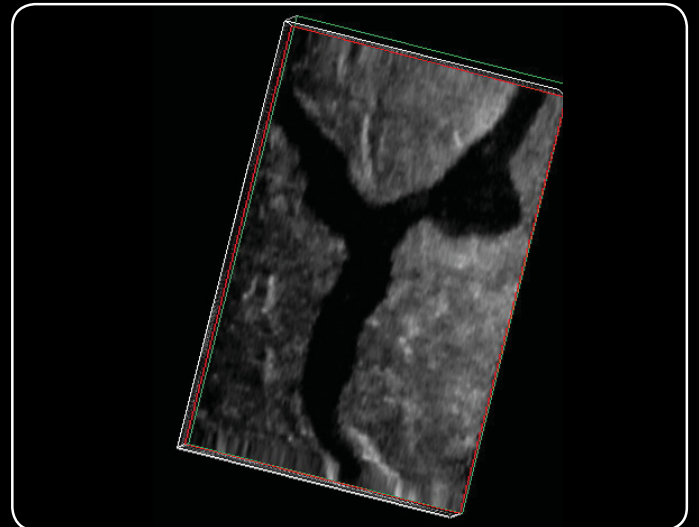
Excellent contrast resolution is identified scanning the heart using the 3Sc



Intricate vascularity is demonstrated within a thyroid nodule using PDI on the 12L



Excellent B-mode image quality is maintained even when color Doppler is activated on the 12L



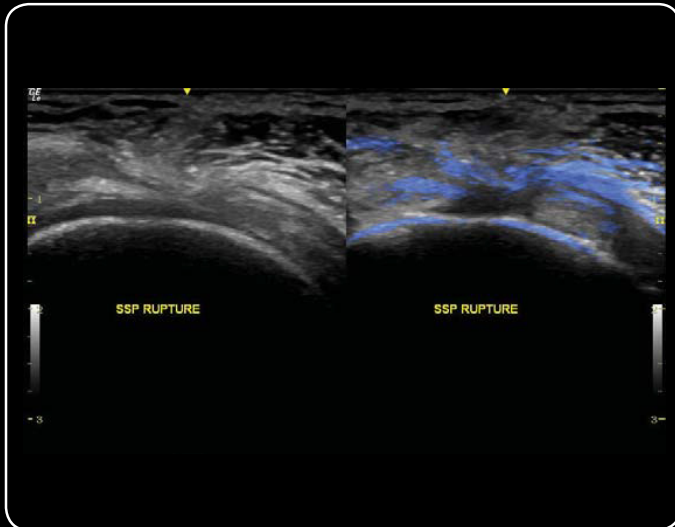
Ability to see the Varicose vein in multiple dimensions is easily achievable using 3D and 12L



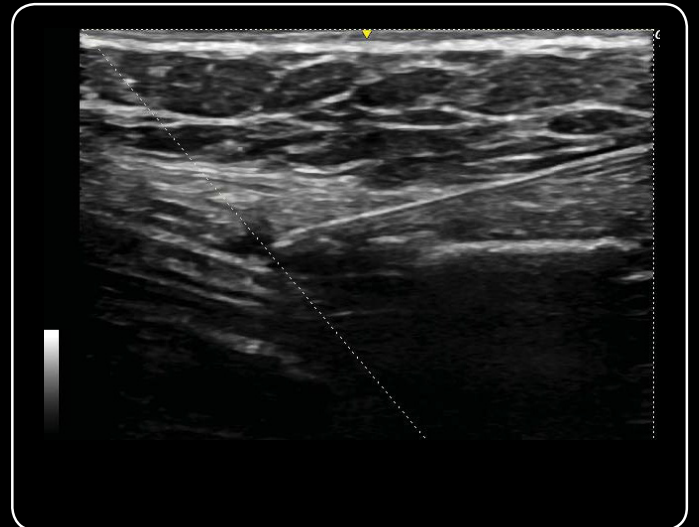
Outstanding visualization of the Lymph node PDI vasulatrization in significant using the 12L



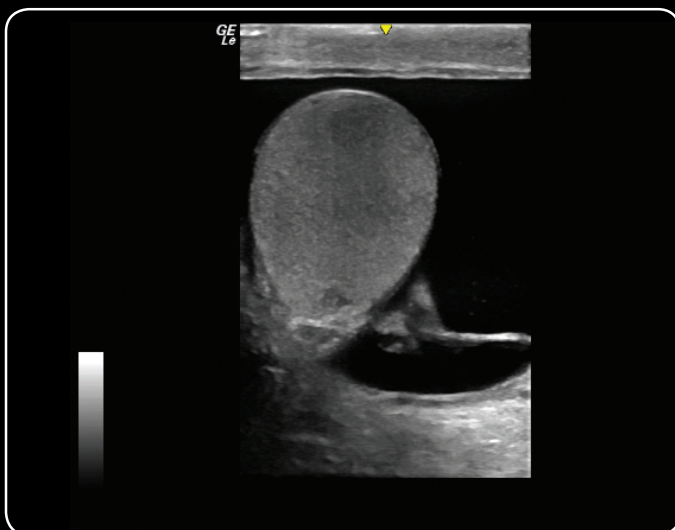
Visualization of the Optic Nerve Sheath is well delineated utilizing the 12L



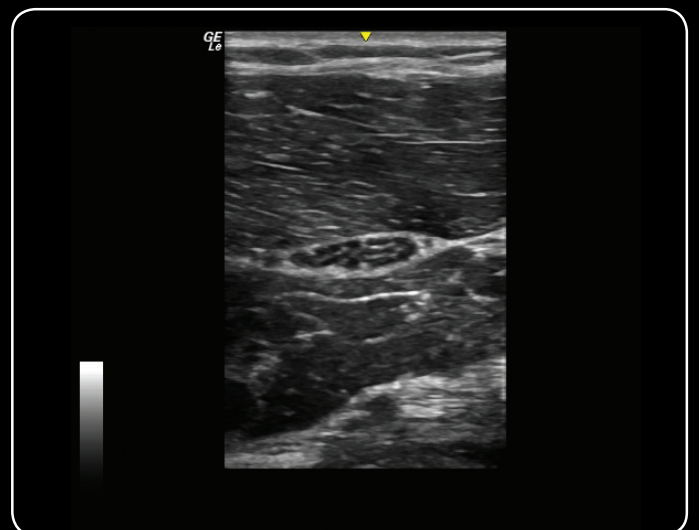
Accurate comparison in Musculoskeletal imaging has been taken to the next level with the addition of Fusion to the daily workflow



Needle and needle tip are clearly demonstrated approaching the Transverse Abdominus muscle for TAP block procedure



Remarkable clarity of a complex hydrocele surrounding the testicle image with 12L probe



Exceptional detail of the fascicles within the axillary nerve are visualized with the high resolution capabilities of the L10-22 probe

About GE Healthcare

GE Healthcare provides transformational medical technologies and services to meet the demand for increased access, enhanced quality and more affordable healthcare around the world. GE (NYSE: GE) works on things that matter - great people and technologies taking on tough challenges. From medical imaging, software & IT, patient monitoring and diagnostics to drug discovery, biopharmaceutical manufacturing technologies and performance improvement solutions, GE Healthcare helps medical professionals deliver great healthcare to their patients.

GE Healthcare
9900 Innovation Drive
Wauwatosa, WI 53226
U.S.A.

www.gehealthcare

General Electric Company reserves the right to make changes in specifications and features shown herein, or discontinue the product described at any time without notice or obligation. Contact your GE Representative for the most current information.

©2016 General Electric Company — All rights reserved.

Not all features or specifications described in this document may be available in all probes and/or modes.

All probes names include the -RS in the name to identify the connector.

GE Medical Systems Ultrasound & Primary Care Diagnostics, LLC, a General Electric Company, doing business as GE Healthcare.

GE, GE Monogram and LOGIQ are trademarks of General Electric Company or one of its subsidiaries.

GE Healthcare, a division of General Electric Company.

JBXXXXXX
June 2016

