



LOGIQ™ E10s

Empowering you to make the difference.

gehealthcare.com

Always ready. Always by your side.



Next-generation, leadership ultrasound...
always ready, always by your side

The new LOGIQ E10s system from GE Healthcare provides multi-purpose capabilities in a scalable configuration to meet your patient needs and support your growth for years to come.

EMPOWERING Confident Diagnosis

Experience the exceptional images and increased clinical flexibility to address a wide range of patients and facilitate an accurate diagnosis.



Scalable to a whole-body solution: Our full suite of robust, standard features and scalable options allow you to configure the optimal system to meet your imaging needs—head to toe, obese to thin, neonate to geriatric.

Exceptional imaging: Next-generation cSound™ Architecture—now with new Advanced Speckle Reduction Imaging (SRI)—delivers images of exceptional uniformity, from near to far field. The system acquires and reconstructs data with 48x the data throughput and 10x the processing power of our previous systems. There's no need to adjust the focus—the information you need is there, instantly.

E-Series and XDclear™ probes: Powerful high fidelity and broad bandwidth produce high resolution images whether scanning superficial or deep targets, or at any point in between.

Optimized for small vessel imaging: An innovative new tool, Radiantflow™, provides a near-3D look when visualizing blood flow in tiny vessels, especially when combined with Micro Vascular Imaging (MVI).

EMPOWERING Comprehensive Tools

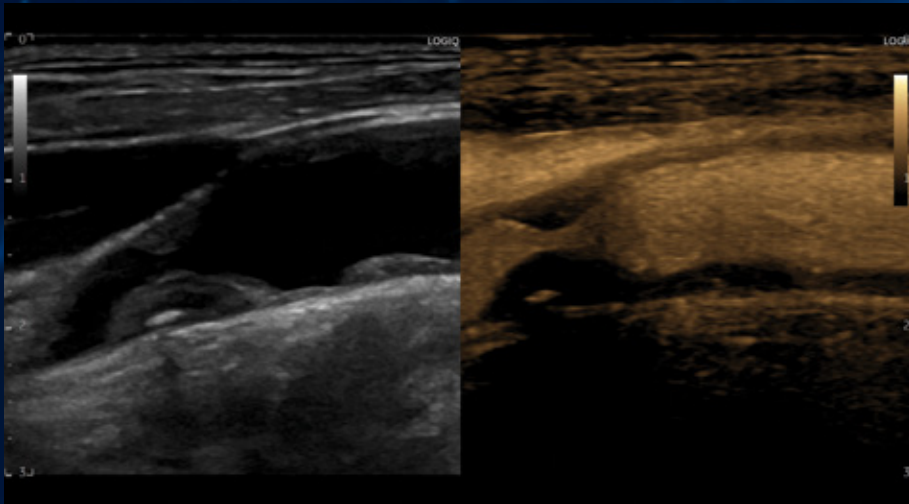
Choose from a robust offering of tools to help improve the speed and precision of diagnosis, guidance and treatment in abdominal, cardiac, OB/GYN, vascular, breast, pediatrics and musculoskeletal applications. Among the available capabilities:

2D Shear Wave & Strain Elastography: Determine qualitative, quantitative and semi-quantitative assessment of tissue elasticity. Now available with a Shear Wave Elastography Quality Indicator to support confident measurements.

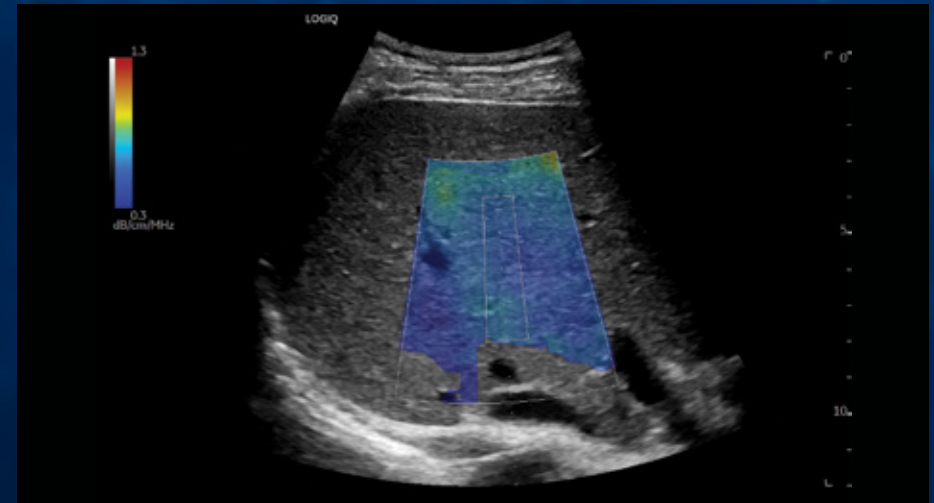
Ultrasound-Guided Attenuation Parameter (UGAP): Quantifies liver steatosis to aid in early identification and monitoring of patients with NAFLD, NASH or ASH.

Contrast-enhanced ultrasound (CEUS): Visualize tissue structure and lesion vascularity clearly to optimize diagnostic accuracy.

Photo Assistant app: Acquire photos of relevant anatomy via an Android™ smart device and include them with the clinical images in the report, providing valuable context.



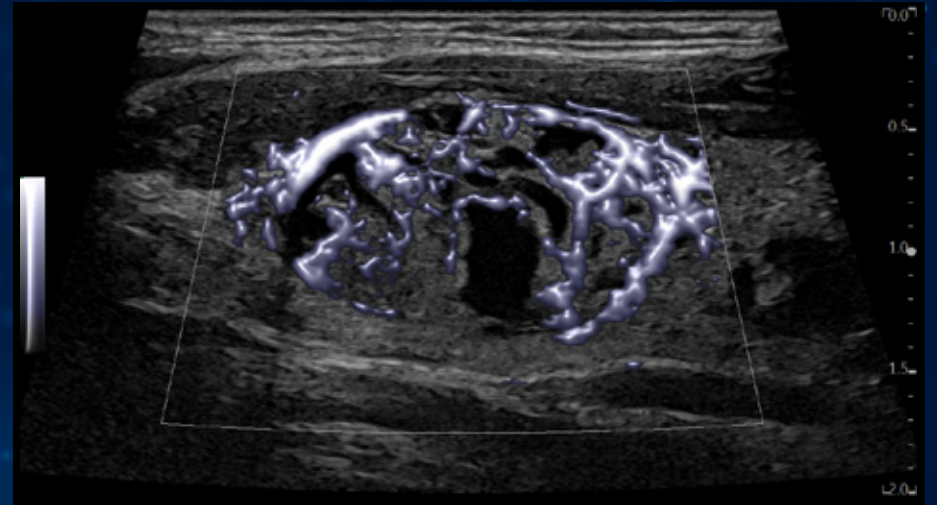
Carotid with plaque, L2-9-D



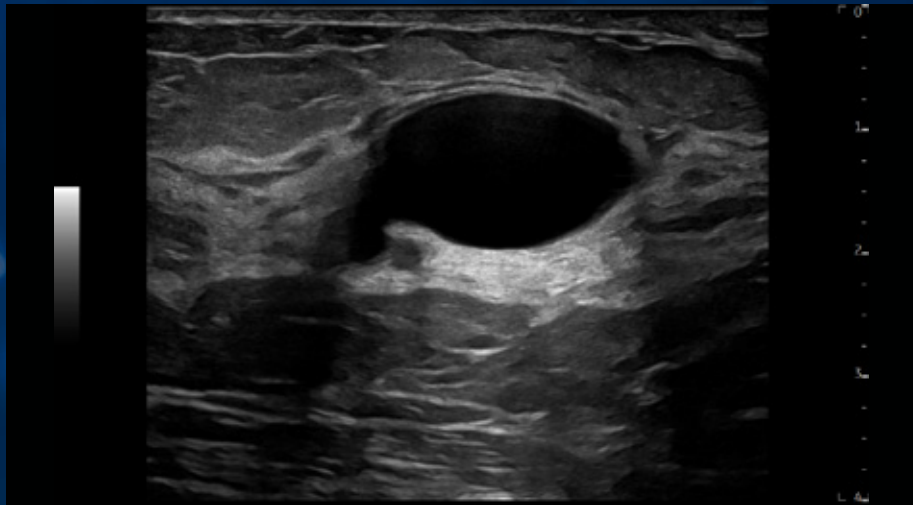
Liver UGAP, C1-6-D



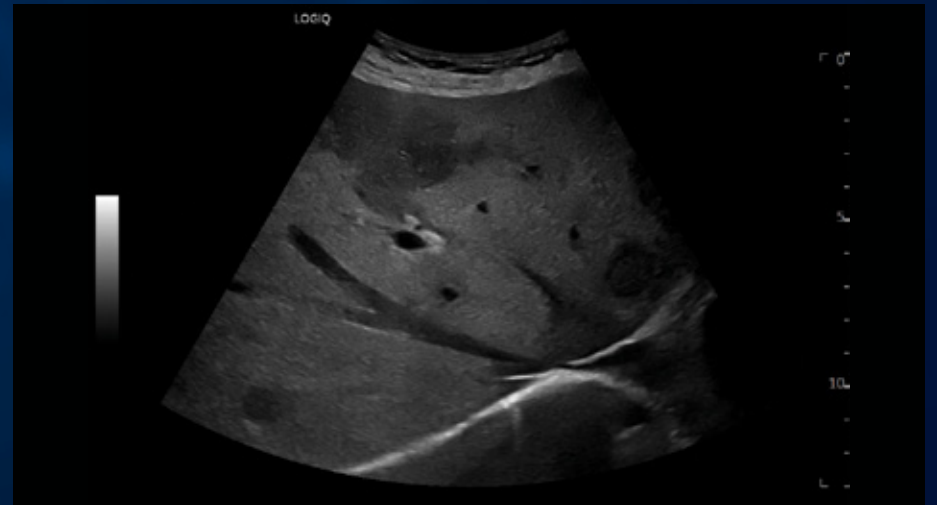
Liver Shear Wave measurement, C1-6-D



Thyroid MVI, L6-24-D



Breast B-Mode, ML4-20-D



Liver with metastatic lesions, C1-6-D

EMPOWERING

Concise Workflow

Achieve new levels of workflow efficiency to stay ahead of your daily challenges. By leveraging the power of artificial intelligence (AI), the LOGIQ E10s helps reduce the number of steps required for excellent image optimization for the entire exam.



AI-based tools, powered by Edison

Options include:

- **Auto Doppler Assistant:** Automatically adjusts the color box and angle, so users can complete exams in 20% less time with 50% fewer keystrokes¹
- **Auto Lesion Segmentation:** Automatically traces lesion boundaries and generates two-dimensional measurements with just a few keystrokes
- **OB Measure Assistant:** Reduces keystrokes and enhances reproducibility by automating key fetal measurements



Productivity enhancers

Options include:

- **EZ Imaging:** Enhances workflow with customizable probe pre-sets, simplified touch panel to reduce operator interactions, and quick patient set-up, resulting in 32% less time with 38% fewer keystrokes¹
- **Scan Assistant:** Customizable automation helps reduce keystrokes and exam times
- **Compare Assistant:** View a prior study – ultrasound, mammography, CT or MR – and current images together in real time via a split screen on the monitor
- **Start Assistant:** Automatically launches the preferred setting when the user selects an exam description
- **Hepatic Assistant:** Combines 2D Shear Wave Elastography and UGAP in a single exam with the push of a button



Exceptional ergonomics

- **Familiar user interface:** The new system offers greater functionality while maintaining the ease of operation and satisfying user experience that has become a hallmark of LOGIQ interface design
- **Exceptional mobility:** The system easily fits into crowded suites. With the optional Power Assistant battery, there's no need for re-boot, and you can even scan on battery power
- **Streamlined archiving and reporting:** Robust DICOM® connectivity allows images to be saved to a central location and reviewed alongside other imaging modalities



Smart Investment

Ultrasound systems for today, platform for tomorrow

The LOGIQ E10 Series is the smart choice in leadership ultrasound. Its multi-purpose versatility and scalability help you address a wide range of clinical applications and patient populations.

Our A to A digital platform is aware of and interacts with the digital ecosystem around it to provide the next level of assistance for the ultrasound user. SonoDefense, our six-layer approach to data security, helps keep your system safe and functional. And our latest digital support tools—including performance analytics, live clinical training, and advanced system diagnostics—help improve productivity.



1. Based on an internal GE study. Data available upon request.

© GE, 2021

Commercial availability of GE Healthcare medical systems is subject to meeting local requirements in a given country or region. Contact a GE Healthcare Representative for more information. GE Healthcare reserves the right to make changes in specifications and features shown herein, or discontinue the product described at any time without notice or obligation. GE, the GE Monogram, LOGIQ, cSound, Radiantflow, and XDclear are trademarks of GE. Android is a trademark of Google LLC. GE Healthcare, a division of GE. GE Medical Systems, Inc., doing business as GE Healthcare.

December 2021
JB04771XE

