



# Voluson Expert 22 Gynecology

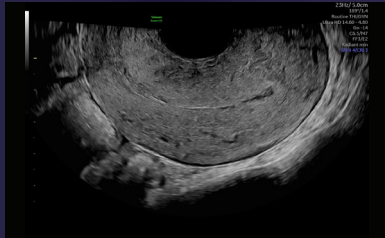
## You Set the Limits

Symptoms such as pelvic pain, post-menopausal bleeding, genitourinary dysfunction, and infertility can be confusing and concerning for your patients. The Voluson™ Expert 22, with advanced analysis tools and easy 3D technologies, can help you gain greater insights into pelvic anatomy and pathology, thus detecting and diagnosing gynecological conditions sooner. Be confident you have the vital information needed to plan treatment or explore interventional options to help your patients lead a healthier life.

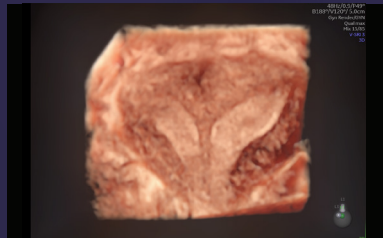


# SIMPLIFYING DIAGNOSES TO FIND ANSWERS

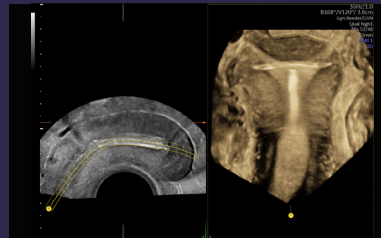
Every pelvic exam brings the opportunity to help ensure the future health of your patients.



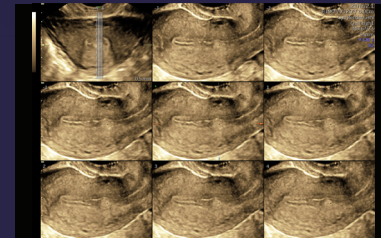
**2D Imaging** enhanced clarity and detail with minimal fine-tuning



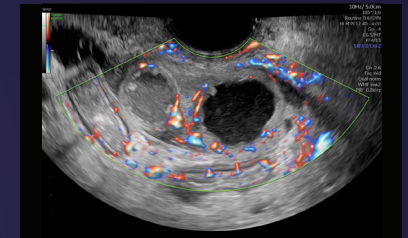
**3D Imaging** provides views not possible with 2D scanning for a more complete evaluation



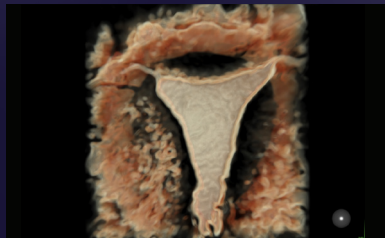
**Advanced VCI with OmniView** improves contrast resolution and visualization of anatomy in any image plane, even irregularly shaped structures



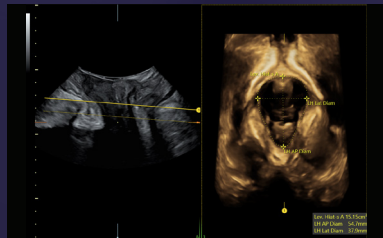
**Tomographic Ultrasound Imaging (TUI)** helps view gynecology volumes in parallel slices for a comprehensive view through anatomy and/or pathology



**SlowflowHD and Radiantflow™** expand the range of visible blood flow with excellent sensitivity



**3D Hysterosalpingo-Foam Sonography (HyFoSy) and HyCoSy (Hysterosalpingo Contrast Sonography)** – Non-ionizing procedure for tubal patency assessment with 3D display of fallopian tubes\*



**SonoPelvicFloor** – an AI-based technology that automates plane alignment, measurements, and offers a guided workflow for pelvic floor assessment thereby eliminating exam uncertainty and improving efficiency\*\*



**Uterine Classifications** based on ESHRE, ESGE, and ASRM guidelines\*\*\* help simplify identification and reporting of uterine malformations

Document ovarian cancer risk estimate based on **IOTA (International Ovarian Tumor Analysis) Simple Rules, IOTA LR2, and IOTA ADNEX**

Evaluate risk and assign classification of the endometrial lining based on **IETA (International Endometrial Tumor Analysis)**. Utilize the onboard **IDEA (International Deep Endometriosis Analysis)** protocol for thorough and comprehensive step by step analysis



© GE, 2022

GE Healthcare reserves the right to make changes in specifications and features shown herein, or discontinue the product described at any time without notice or obligation. Contact your GE Healthcare representative for the most current information. GE, the GE Monogram, Voluson and Radiantflow, are trademarks of GE. GE Healthcare, a division of GE. GE Medical Systems, Inc., doing business as GE Healthcare.

June 2022  
JB18774XX

\*HyCoSy/HyFoSy not approved in all countries.

\*\*Not available in all countries.

\*\*\*ESHRE – European Society of Human Reproduction and Embryology.  
ESGE – European Society of Gastrointestinal Endoscopy  
ASRM – American Society of Reproductive Medicine.